

WELCOME TO PORT MILWAUKEE

PRESENTED BY: ADAM TINDALL-SCHLICHT, DIRECTOR



2022 UPDATE

A story of cargoes and cruise ships

Over the last four years, Port Milwaukee has secured \$60 million in public and private investment, 900% above its annual operating budget.



AGLPA

PORT 
Milwaukee
CONNECTING TO THE WORLD

Milwaukee Harbor Total Tonnage

2017 - 2021

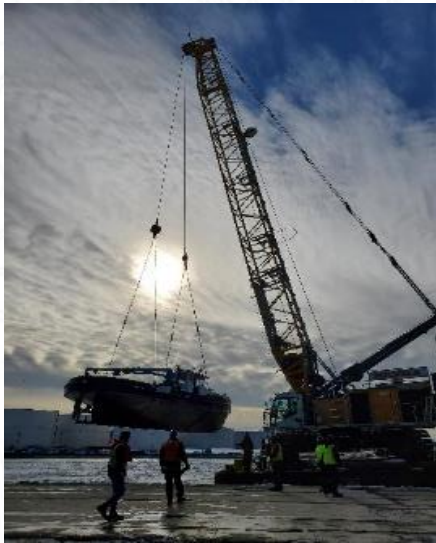
Description	2021	2020	2019	2018	2017	5 Year AVG
Dry Bulk	1,581,817	1,919,135	1,935,727	1,497,682	1,718,894	1,730,651
Steel	169,748	182,955	186,209	174,168	187,107	180,037
Gen. Cargo	4,065	396	3,071	620	1,373	1,905
Liquid Cargo	49,343	45,714	57,803	81,359	25,452	51,934
Total Municipal Port	1,804,973	2,148,200	2,182,810	1,753,828	1,932,826	1,964,527
Total Private Docks	543,446	663,807	485,814	637,833	659,867	598,153
OVERALL	2,348,418 <i>-16%</i>	2,812,008 <i>+5%</i>	2,668,624 <i>+11.5%</i>	2,391,661 <i>-10%</i>	2,628,470	2,569,836

AGLPA

TRIALS

Responding to the expected and unexpected

- January 2020 Lake Michigan Federal Disaster
- Staff retirements and turnover
- Sinking of *Harbor Seagull*
- COVID-19 Operations



AGLPA

TRIUMPHS

Generational investment in the Port's future

- Agricultural Maritime Export Facility
- Michels, De Long, Kinder Morgan, and Perch Point long-term leases executed
- Outfitting of new workboat *Larry Sullivan*
- Pearl Seas Priority Agreement
- Viking Cruises
- Capital Asset Renewal Plan (CARP)
- Wisconsin Commercial Ports Association



AGLPA

PORT
Milwaukee
CONNECTING TO THE WORLD

LOOKING AHEAD

Investment and targeted initiatives

- **Complete AMEF construction in 2023**
 - Grow export volume of Wisconsin and Hinterland agricultural commodities
- **Area of Concern (AOC) Initiative**
 - Construct a Dredged Material Management Facility (DMMF) to store contaminated sediment
 - Delist AOC
- **Foster ongoing cargo diversification and growth**
- **Invest in sustainability initiatives**
 - Leverage StewardSHIP program
 - Integrate coastal resiliency, climate adaptability into future investments
- **Leverage the Harbor Assistance Program (HAP)**



AGLPA

LOOKING AHEAD

Sustaining cruise-related momentum

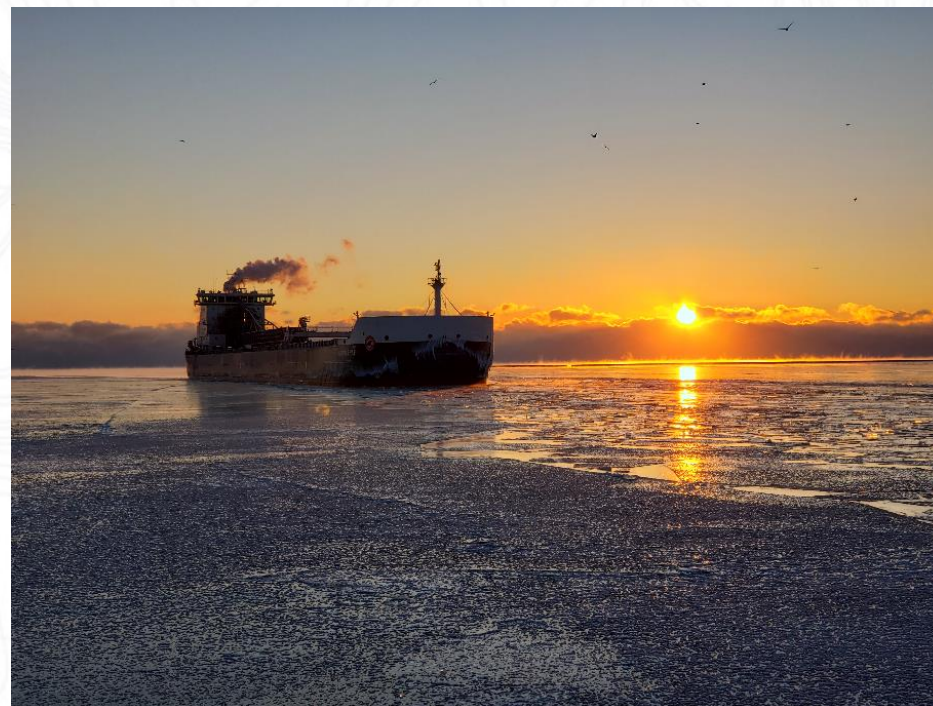
- **Cruise infrastructure**
 - Develop South Shore Cruise Dock for Seawaymax cruise vessels
 - Develop available landside acreage adjacent to South Shore Cruise Dock
- **Market development**
 - Relationship building with current and new cruise lines
 - Foster Milwaukee Cruise Collaborative
 - Leverage Great Lakes Cruising Coalition and Cruise the Great Lakes initiatives



MOVING THE NEEDLE

Challenges and opportunities as the Port moves forward

- Customs
- Containers
- Pilotage
- Climate Change & Coastal Resiliency
- Water & Land Use Planning
- ARPA, BIL & Sustained Federal Investment



AGLPA

PORT 
Milwaukee
CONNECTING TO THE WORLD

THANK YOU FOR YOUR TIME

portmilwaukee.com

2323 S. Lincoln Memorial Dr. Milwaukee, WI 53207

port@milwaukee.gov

+1 414 286 3511

